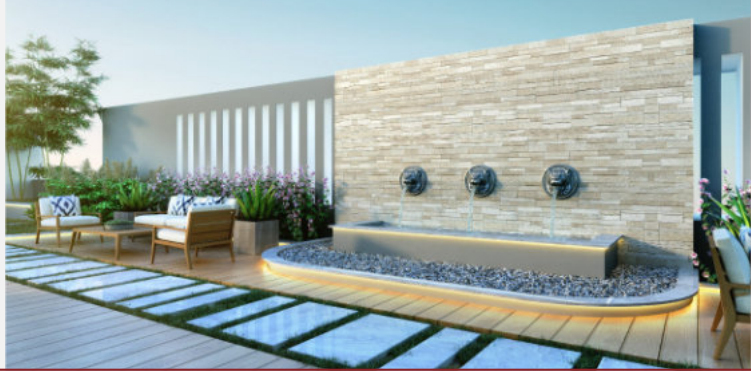


# Atharva Vaibhav

Experience the luxury of modern living



Project By

**Atharva Developers**

RERA NO - P51800078316



+91 9321203319



[atharvadevelopers.in](http://atharvadevelopers.in)

Sales Office : Flat No. 102, 1st floor, Pallavi Chhaya, Building No. 5, Shell Colony Road, Sahakar Nagar 1, Chembur – 400071

Site Address : Building No 2 and 3, Sahakar Nagar 5 (opposite Tilak Nagar station), Shell Colony, Chembur - 400071

# Atharva Vaibhav



Luxurious living

Excellent connectivity

Modern amenities

Prime neighbourhood

EXPERIENCE THE LUXURY OF MODERN LIVING

Discover urban elegance at Atharva Vaibhav, a contemporary residential building thoughtfully designed for comfort, convenience, and style.

Each residence is crafted to the highest standards, featuring spacious layouts, premium design, and quality interiors to enhance everyday living.

## REDEFINE YOUR LIVING STANDARDS



### Luxurious living

Premium 1 BHK and 2 BHK apartments with aesthetically designed and high-quality interiors



### Excellent connectivity

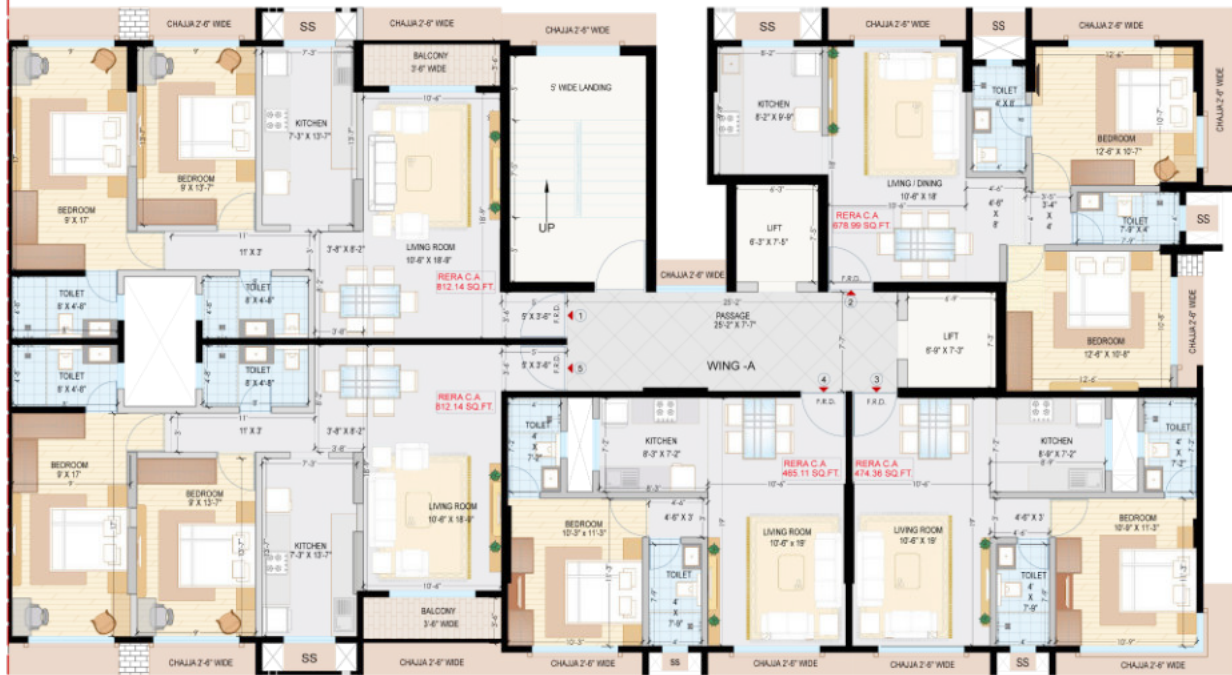
Strategically located just 15 mins away from BKC and less than 1 min from Tilak Nagar Station



**Exclusive 1 BHK and  
2 BHK apartments**

# LAYOUTS

## WING - A



EXISTING 6.00 M. WIDE ROAD SAHAKAR NAGAR NO. 5

TYPICAL FLOOR PLAN

## WING - B



EXISTING 6.00 M. WIDE ROAD SAHAKAR NAGAR NO. 5

TYPICAL FLOOR PLAN

# CONFIGURATIONS



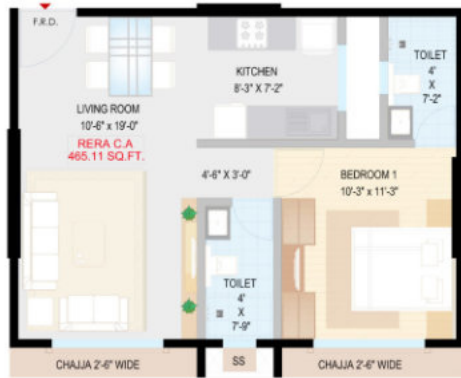
2 BHK - TYPE 01 | RERA Carpet: 679 sq ft.

2 BHK - TYPE 02 | RERA Carpet: 813 sq ft.



ELEVATE YOUR LIFESTYLE WITH LUXURY

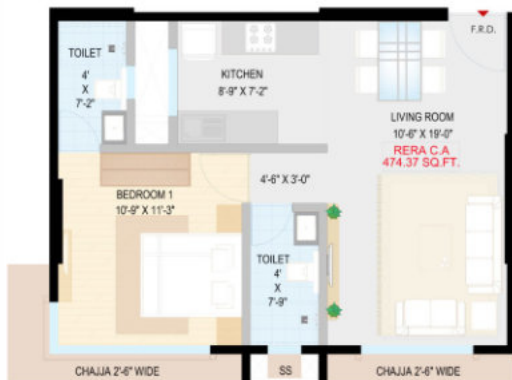
# CONFIGURATIONS



A/104 - 704, 904 - 1404 & B/204 - 704 & 904-1404		
ROOM NAME	DIMENSIONS	AREA (SQ.FT.)
LIVING/DINING	10'-6" X 19'-0"	198.45
PASSAGE	4'-6" X 3'-0"	13.27
KITCHEN	8'-3" X 7'-2"	59.40
TOILET	4'-0" X 7'-5"	31.11
BEDROOM 1	10'-3" X 11'-3"	114.66
TOILET	4'-0" X 7'-2"	28.76
DOOR JAMB		5.57
TOTAL MOHA CARPET AREA		461.39
TOTAL RERA CARPET AREA (AS PER RULES)		465.11

1 BHK - TYPE 01 | RERA Carpet: 465 sq ft.

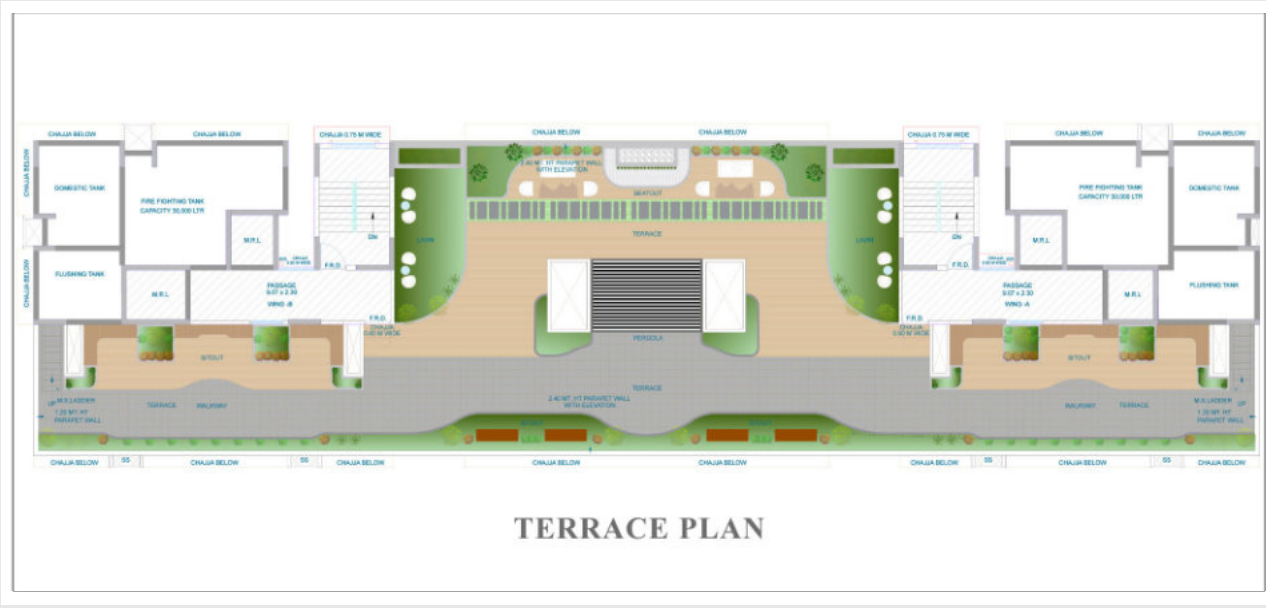
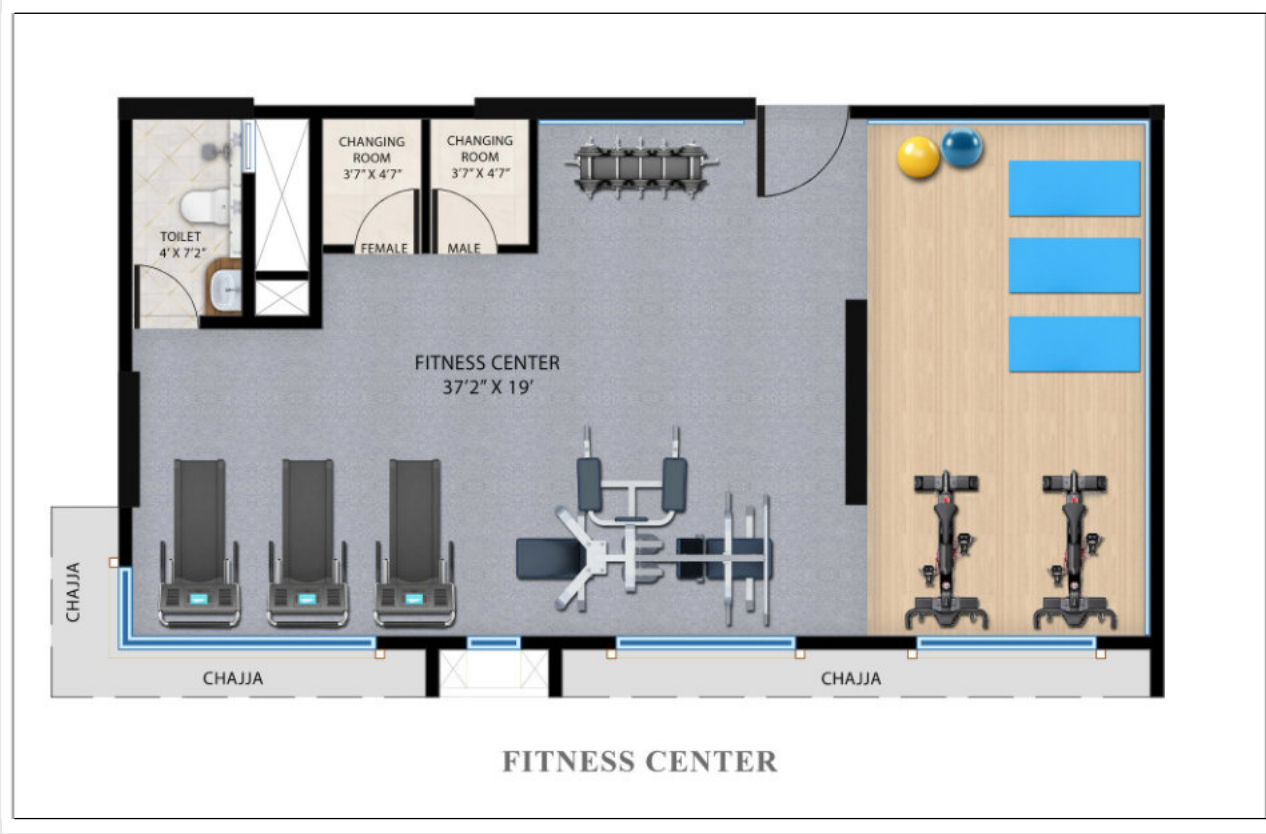
1 BHK - TYPE 02 | RERA Carpet: 474 sq ft.



A/105 - 705, 905 - 1405 & B/205 - 705 & 905-1405		
ROOM NAME	DIMENSIONS	AREA (SQ.FT.)
LIVING/DINING	10'-6" X 19'-0"	198.45
PASSAGE	4'-6" X 3'-0"	13.27
KITCHEN	8'-9" X 7'-2"	62.84
TOILET	4'-0" X 7'-5"	31.11
BEDROOM 1	10'-9" X 11'-3"	120.38
TOILET	4'-0" X 7'-2"	28.76
DOOR JAMB		5.57
TOTAL MOHA CARPET AREA		469.94
TOTAL RERA CARPET AREA (AS PER RULES)		474.37

BEAUTIFUL SPACES, COMFORTABLE LIVING

## LAYOUTS



SMART PRICES FOR SOPHISTICATED LIVING



## Modern amenities

Landscaped roof-top garden,  
fully equipped gymnasium,  
advanced security system



## Prime neighbourhood

Fully developed layout with  
access to premium schools, hospitals,  
shopping centres and business hubs



Fully-equipped gym with dedicated  
changing rooms



Landscaped roof-top terrace with  
gardens, walking track, and patio



Advanced security with CCTV  
cameras and intercom



Sufficient parking space



Elegant building elevation and  
lobby



Four elevators (two dedicated for  
each wing)

# ELEGANCE WITHIN REACH

Premium Living at an Affordable Price



## TRAIN CONNECTIVITY

Tilak Nagar Railway Station (Harbor Line) – 2 mins  
Kurla Station (Central Line) – 10 mins  
Metro Station (Line 2) – 5 mins (upcoming)  
Chembur Monorail – 5 mins



## ROAD CONNECTIVITY

Eastern Express Highway – 5 mins  
Eastern freeway to South Mumbai – 10 mins  
Mumbai – Navi Mumbai – Pune highway – 10 mins  
Bandra Kurla Complex Connector – 15 mins  
Santacruz-Chembur Link Road (SCLR) – 15 mins



## AIR CONNECTIVITY

Domestic Airport – 30 mins  
International Airport – 40 mins

EXCELLENT CONNECTIVITY



HOSPITALS | EDUCATION | GARDENS, PLAYGROUNDS, AND SPORTS | LIFESTYLE & ENTERTAINMENT



## EDUCATION

Swamy Vivekananda School (CBSE) – 10 mins  
St. Gregorios High School (ISCE) – 10 mins  
Ryan International (ICSE) – 15 mins



## HOSPITAL

Savla Hospital and Diagnostic Centre – 5 mins  
Zen Multi-Specialty Hospital – 10 mins  
Asian Heart Hospital (BKC) – 15 mins  
Sion Hospital – 20 mins



## LIFESTYLE & ENTERTAINMENT

K Star Mall – 10 mins  
Cubic Theatre – 15 mins  
Jio World Convention Centre – 15 mins  
R-City Mall – 20 mins  
Phoenix Market City – 20 mins



## GARDENS, PLAYGROUNDS, & SPORTS

Shell Colony Ground – 5 mins  
Jetvan Udyan – 5 mins  
Chembur Gymkhana – 10 mins  
Chembur Golf Club – 15 mins

WELL-ESTABLISHED NEIGHBOURHOOD

## RECENTLY COMPLETED PROJECTS



### Atharva Shweta

Sahakar Nagar (Shell Colony), Chembur  
Fully occupied (OC received)

Completed in November 2020, Shweta Society is a residential property in Sahakar Nagar, Chembur located just 15 mins away from BKC. The project offers premium spacious 2BHK homes overlooking Shell Colony Park and is equipped modern amenities



### Atharva Pallavi Chhaya

Sahakar Nagar (Shell Colony), Chembur  
Fully occupied (OC received)

Completed in March 2024, Pallavi Chhaya is a residential property in Sahakar Nagar, Chembur located just 15 mins away from BKC. the project offers premium 1BHK and 2BHK homes and is equipped with modern amenities (e.g., double-heightened lobby, fully-equipped gymnasium)



Trust, Concrete Vision, Infinite Possibilities

## CONNECT WITH US

### Head Office

1st floor, Atharva House, Indrayani Complex,  
J.K.Sawant Marg, Dadar (W), Mumbai – 400028

### Sales Office

Flat No. 102, 1st floor, Pallavi Chhaya, Building No. 5,  
Shell Colony Road, Sahakar Nagar 1, Chembur – 400071



+919321203319



info@atharvadevelopers.in



atharvadevelopers.in

## ABOUT US

Atharva Developers was founded in the 1990s with a vision to create quality homes for modern living. At Atharva, we strive to build premium new-age homes at affordable prices.

We bring with us experience of over 30 years in understanding construction, design and in navigating the regulatory and legal complexities of this industry.

STRICT COMPLIANCE

ETHICAL CONDUCT

QUALITY EXCELLENCE